

YUJA – LIVE STREAMING USING YUJA



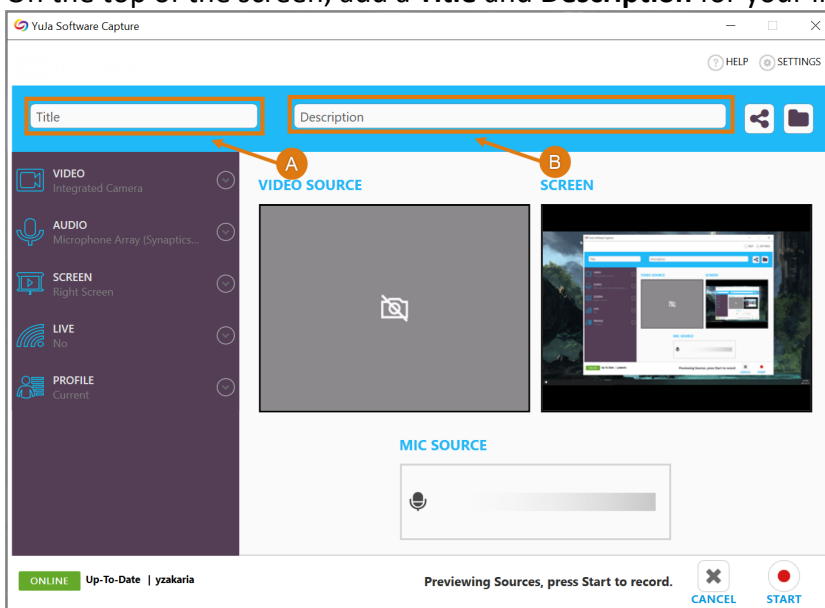
Teaching and Learning Support Service (TLSS), uOttawa

CONTEXT

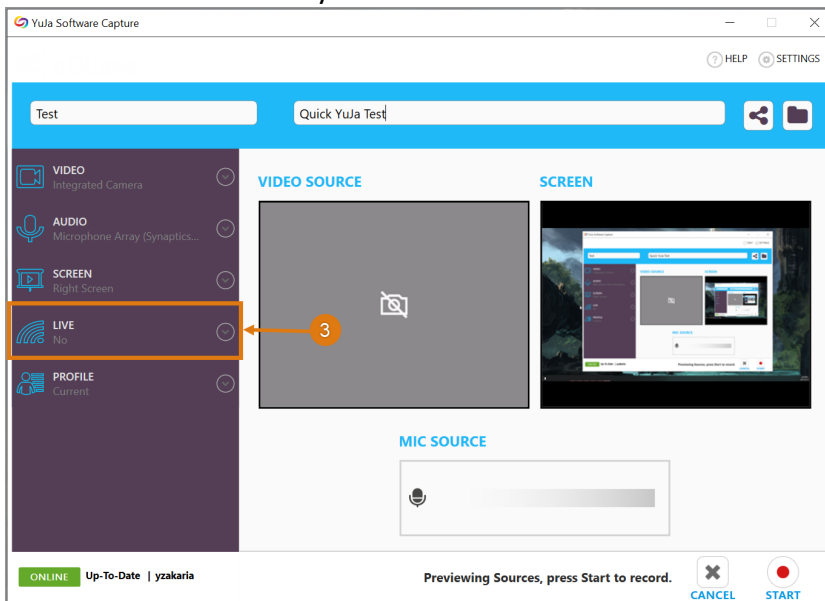
YuJa Live Streaming allows professors to stream their classes synchronously over the internet. Through this document, you will learn how to host a Live Stream, features while watching a Live Stream, and all the different settings within the program.

SECTION 1: LIVE STREAMING

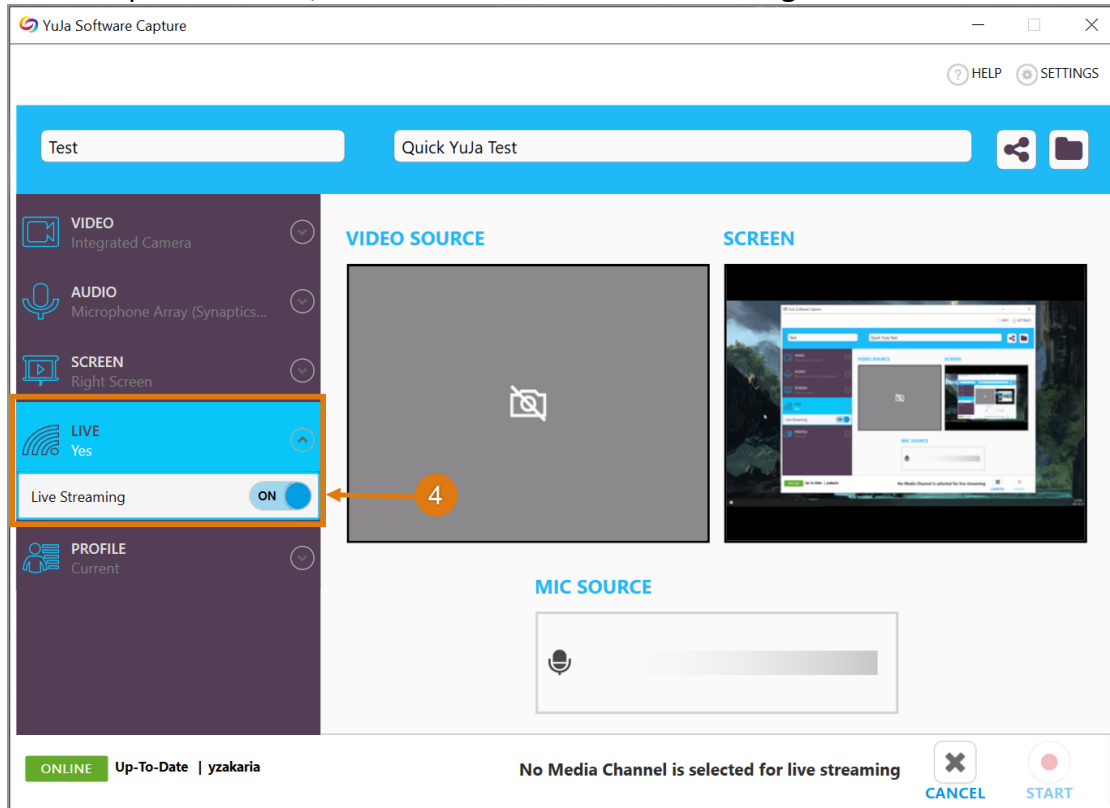
1. Open the **YuJa Software Capture** program.
2. On the top of the screen, add a **Title** and **Description** for your live stream.



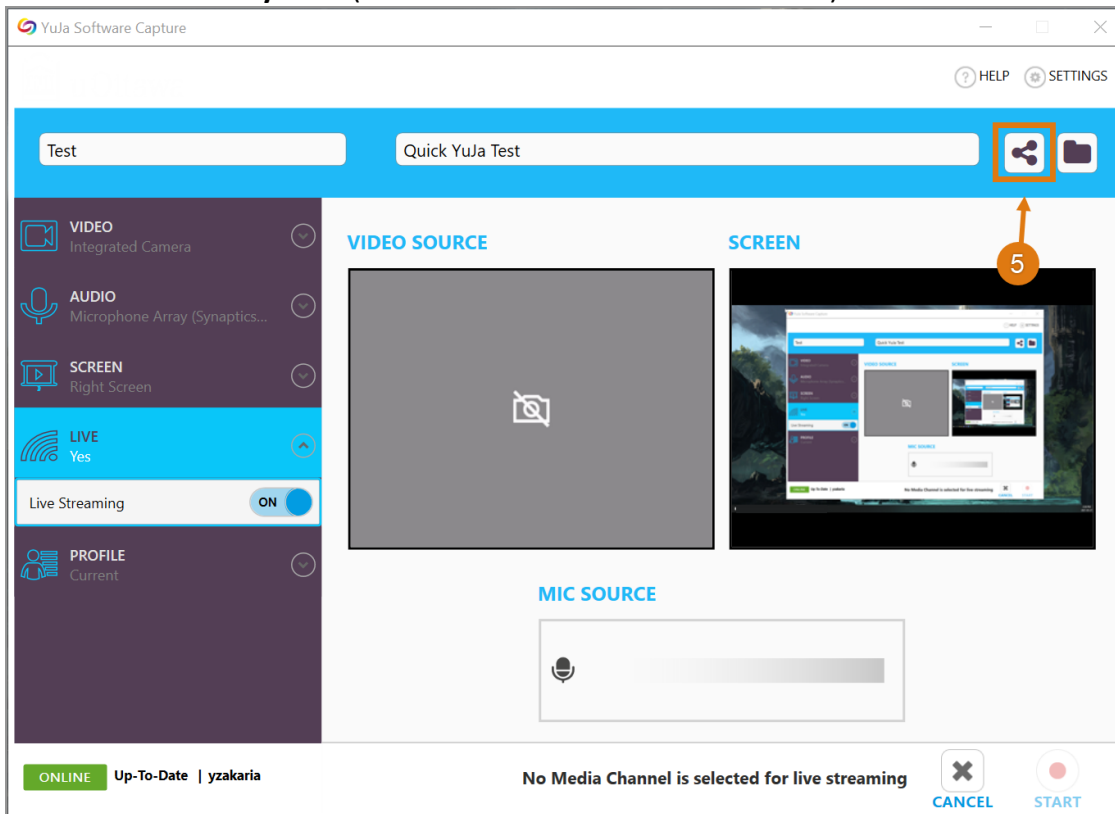
3. In the bar on the left of your screen click **“Live”**



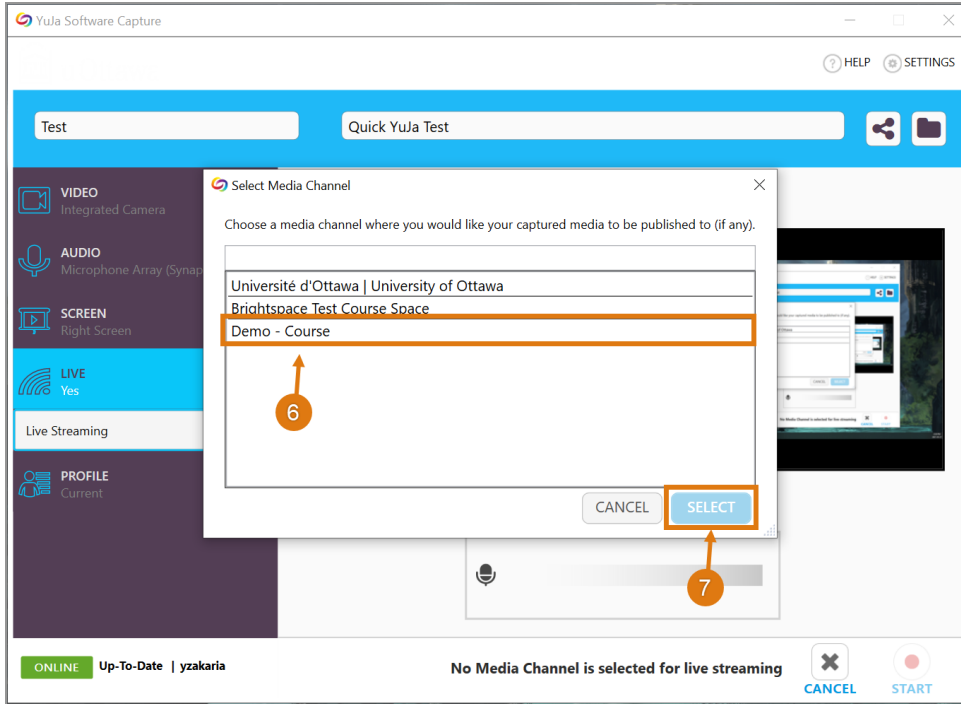
4. In the drop-down menu, click “On” to turn on **Live Streaming**.



5. Click on the **Share symbol** (three dots connected with two lines).



6. Choose a **Media Channel** in which to share your live stream then click **Select**.

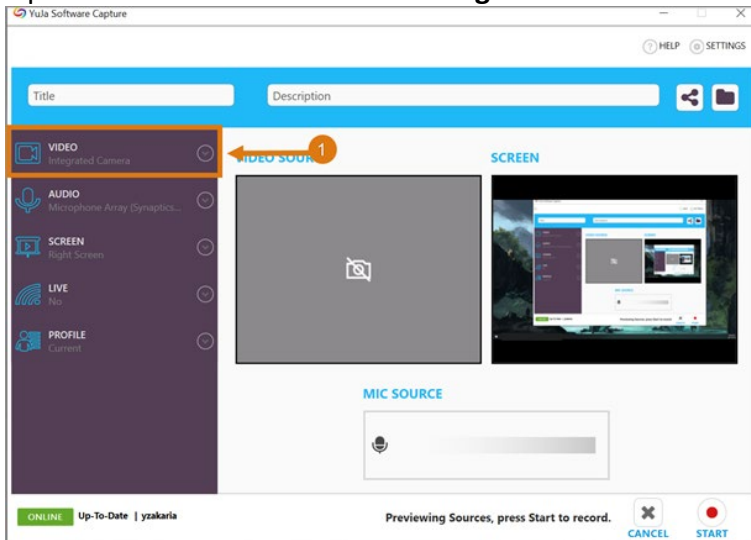


SECTION 2: VIEWING A LIVE STREAM AND FEATURES

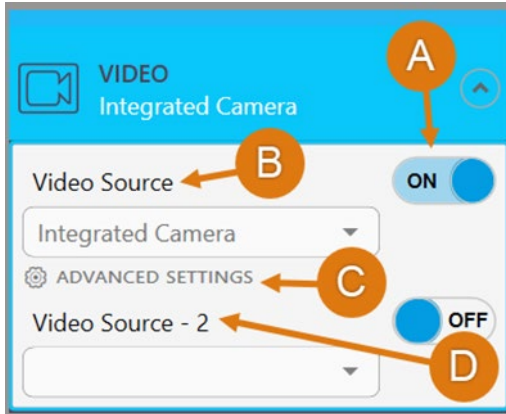
1. Open any browser and insert **Live Stream link**.
2. The following tools are available for **YuJa Live Stream**.
 - a. **Pause** to pause the stream at any point.
 - b. **Gear Icon** to modify the resolution.
 - c. **CC** activates Closed Captions.
 - d. **Chat** has three tools:
 - i. **Chat** where people can ask questions or communicate (available to everyone).
 - ii. **Predefined Response** for interacting with chat members.
 - iii. **Emojis** tool to add Emojis into the Chat.

SECTION 3: VIDEO SETTINGS

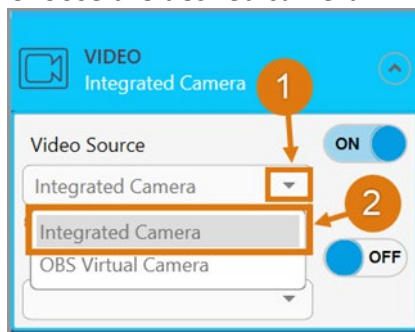
1. Open **YuJa** and click on **Video Settings**.



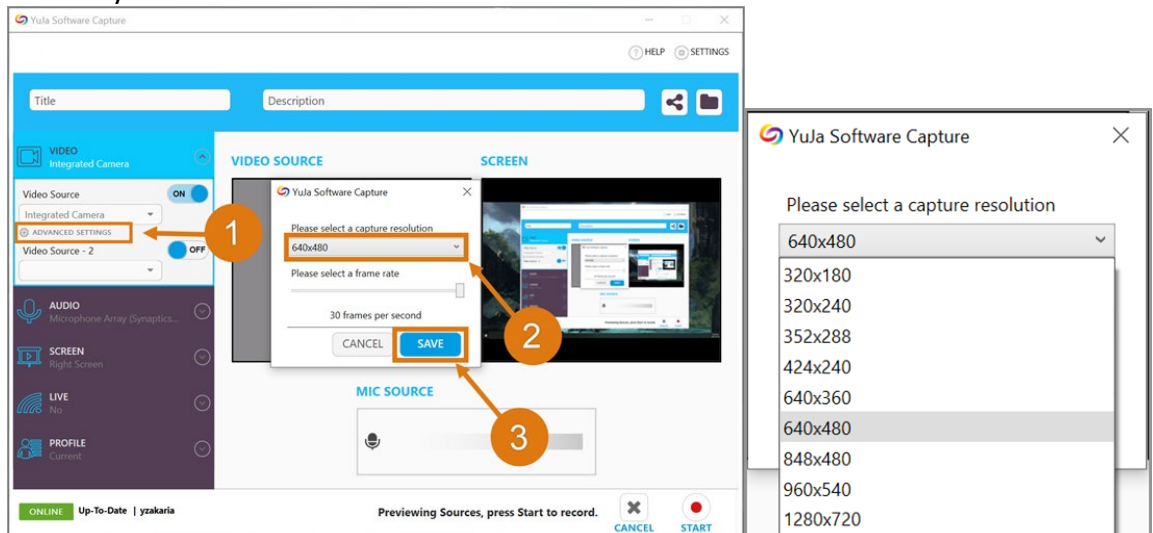
2. The drop-down menu has several settings.



- a. **On/Off** to turn camera on and off.
- b. **Video Source** is the main camera that is used.
 - i. Open the drop-down menu by clicking the arrow.
 - ii. Choose the desired camera.



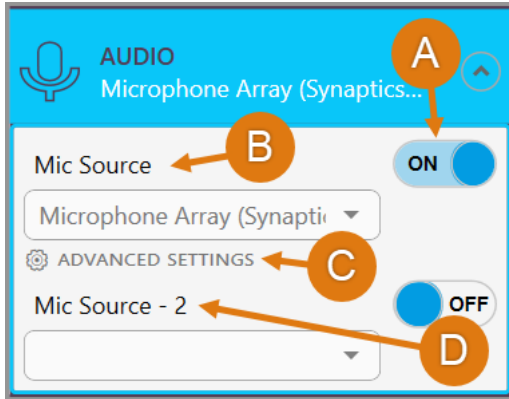
- c. **Advanced Settings**
 - i. Click **Advanced Settings**.
 - ii. Click the resolution to open the drop-down menu.
 - iii. Choose your resolution and click **Save**.



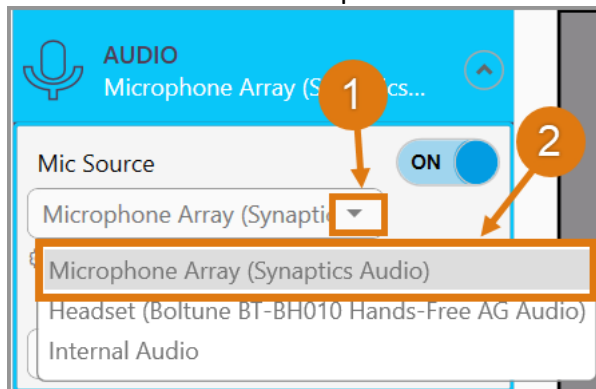
- d. **Video Source - 2** in case you wanted to add a second camera to the stream.

SECTION 4: AUDIO SETTINGS

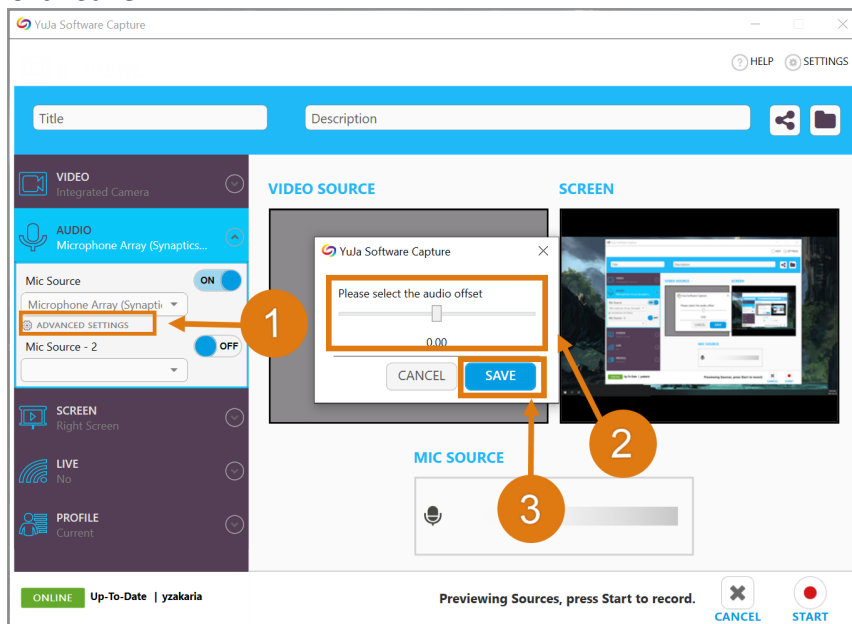
1. Open **YuJa** and click on **Audio Settings**.



- a. **On/Off** to turn microphone on and off.
- b. **Audio Source** is the main microphone that is used.
 - i. Open the drop-down menu by clicking the arrow.
 - ii. Choose the desired microphone.



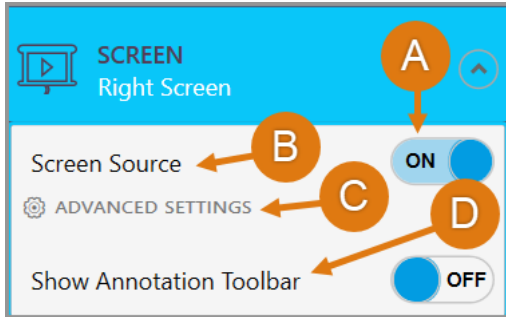
- c. **Advanced Settings**
 - i. Click **Advanced Settings**.
 - ii. Choose your audio offset.
- i. Click **Save**.



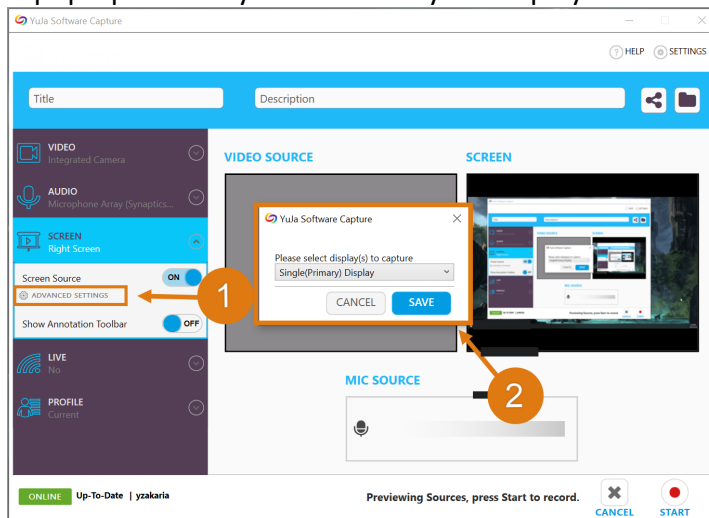
- d. **Audio Source - 2** in case you wanted to add a second microphone to the stream.

SECTION 5: SCREEN SETTINGS

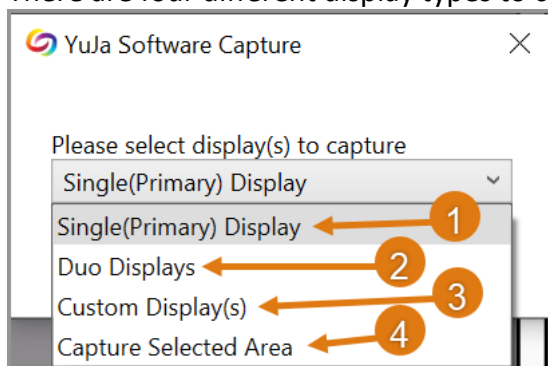
1. Your selected screen will be shown in the live stream, so it is important to choose the right settings.



- a. **On/Off** to turn screen capture on and off.
- b. **Screen Source** to choose which screen(s) are present inside the stream.
- c. **Advanced Settings**
 - i. Click **Advanced Settings**.
 - ii. A pop-up will ask you to choose your display.

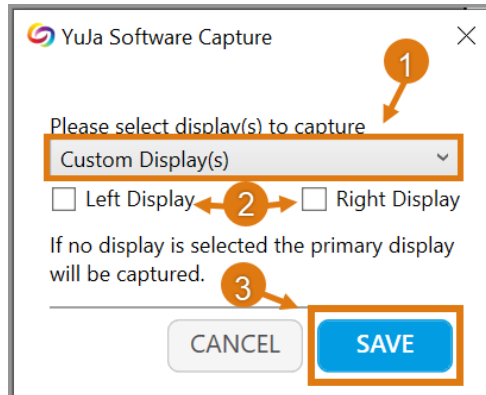


- iii. There are four different display types to choose from.



1. **Single (Primary) Display** will choose your default display (one screen).
2. **Duo Displays** will show both of your screens if you have two displays.
3. **Custom Display(s)** allows you to specify which display you want shown (if you have more than one).
 - a. For this option, click **Custom Display(s)**.
 - b. Then choose the **Left and/or Right Display**.

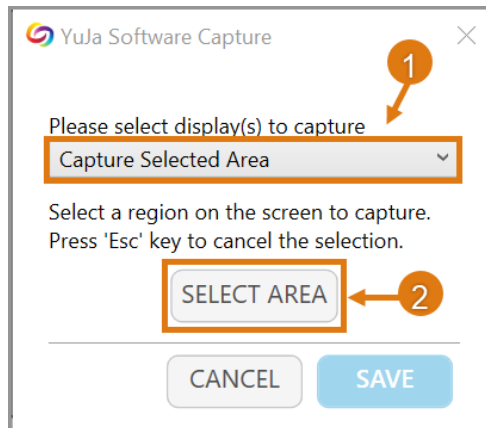
c. Click **Save**.



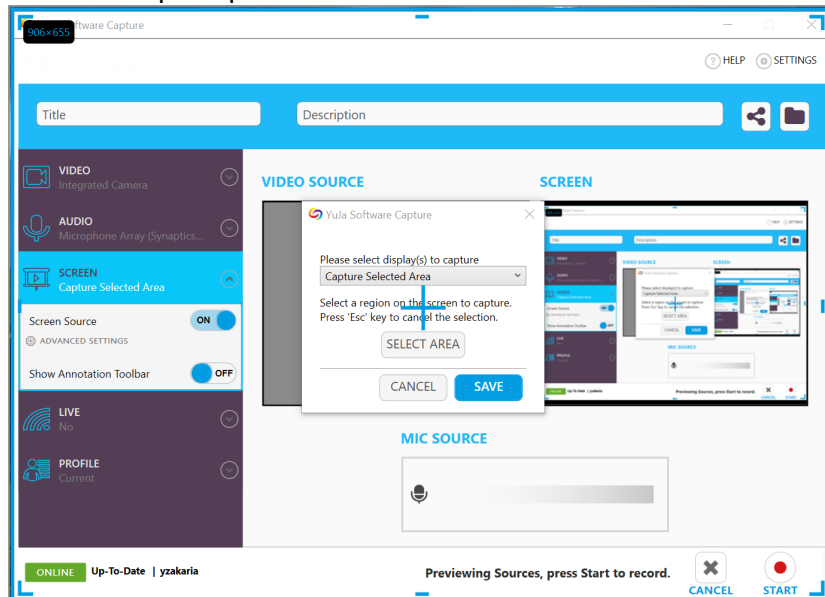
4. **Capture Selected Area** to select a specific area to show during the live stream.

a. For this option, click **Capture Selected Area**.

b. Click **Select Area**.



c. You will be prompted to select the desired area with a blue rectangle.

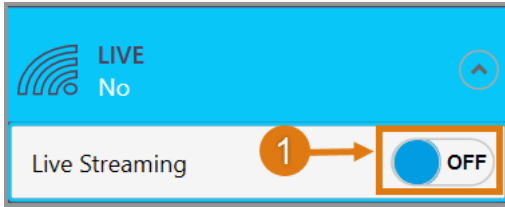


d. If you are satisfied with your selection, click **Save**.

d. Show **Annotation Bar** to display the function.

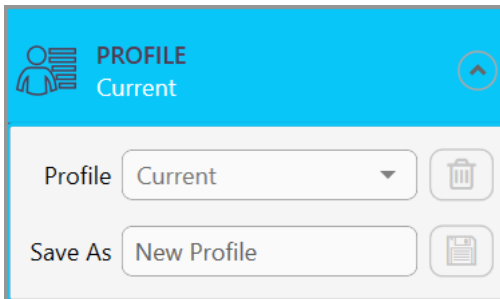
SECTION 6: LIVE SETTING

1. Live Setting
 - a. **On/Off** to turn the Live Stream On/Off.

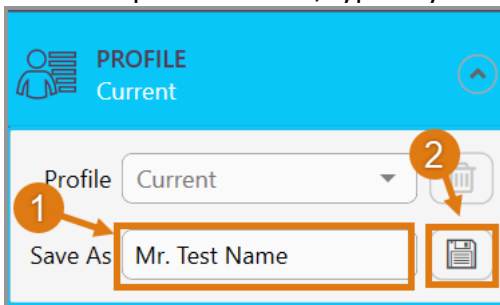


SECTION 7: PROFILE SETTINGS

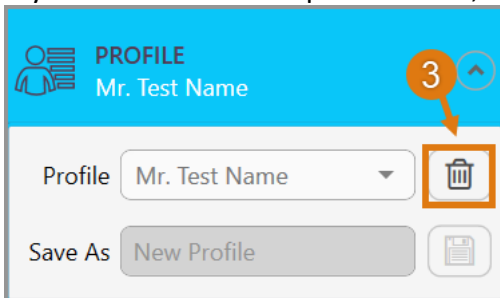
1. Your profile is what will appear as your name in a Live Stream.
 - a. Click on **Profile**.



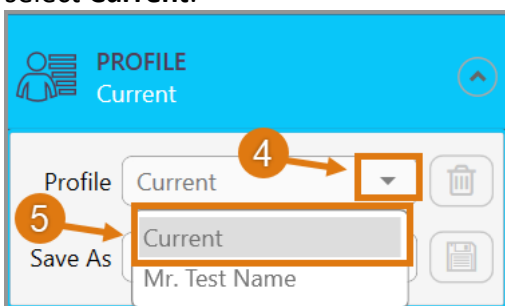
- b. In the drop-down menu, type in your desired profile name, then click **Save**.



- c. If you want to delete a profile name, click **delete** (trash can symbol).

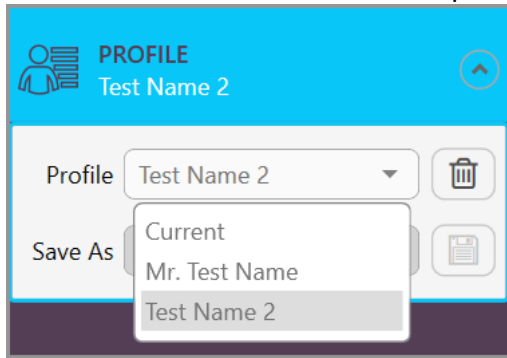


- d. If you want to create more than one profile name, click the arrow beside your profile name and select **Current**.



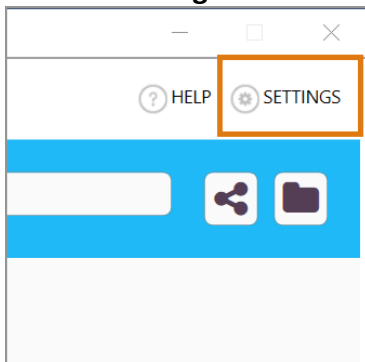
- e. Follow steps a-b.

- f. You can switch between different profile names as you please.

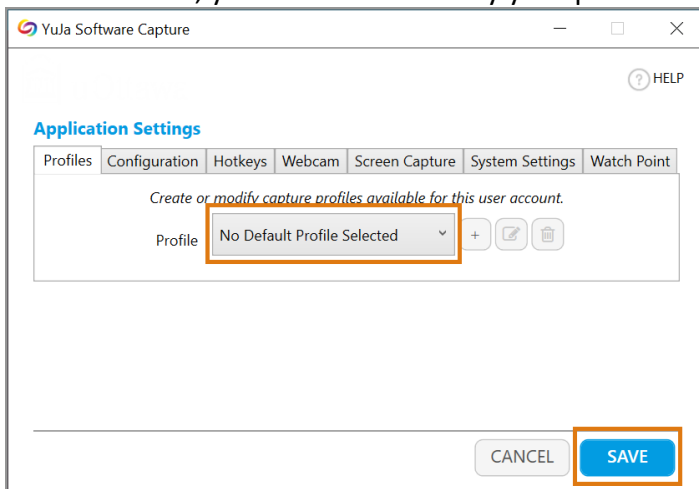


SECTION 8: GENERAL SETTINGS

1. Click on **Settings**.

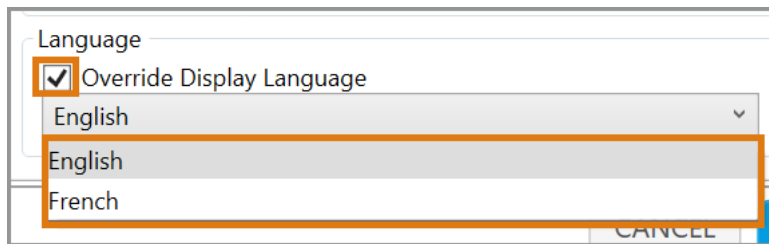
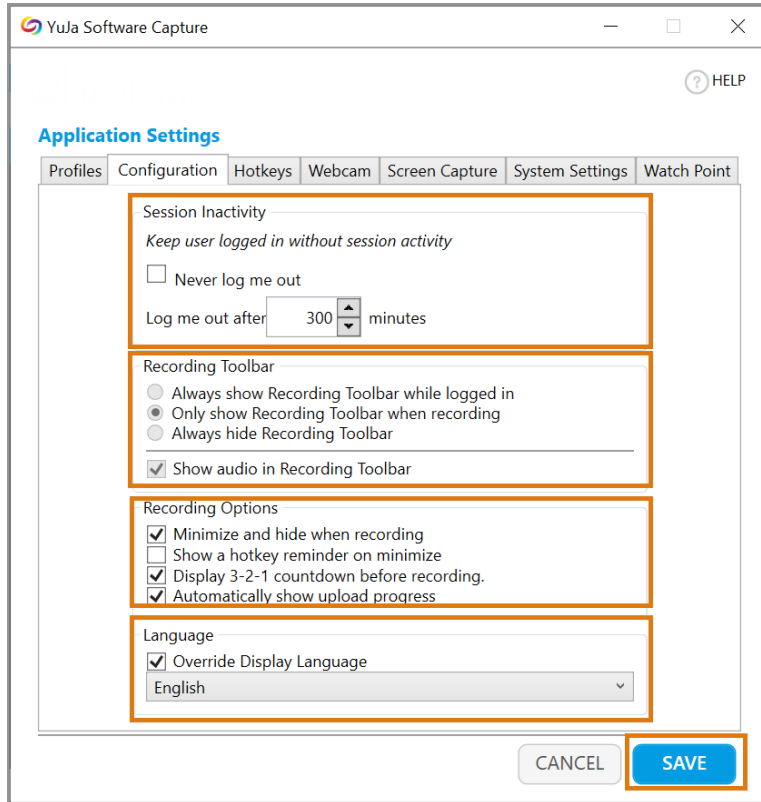


2. Under **Profiles**, you can add or modify your profile name.

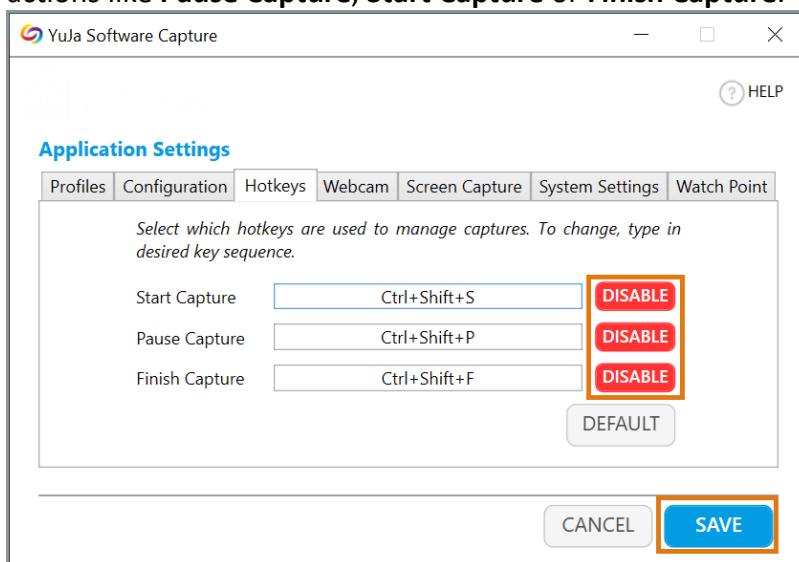


3. Under **Configuration**:

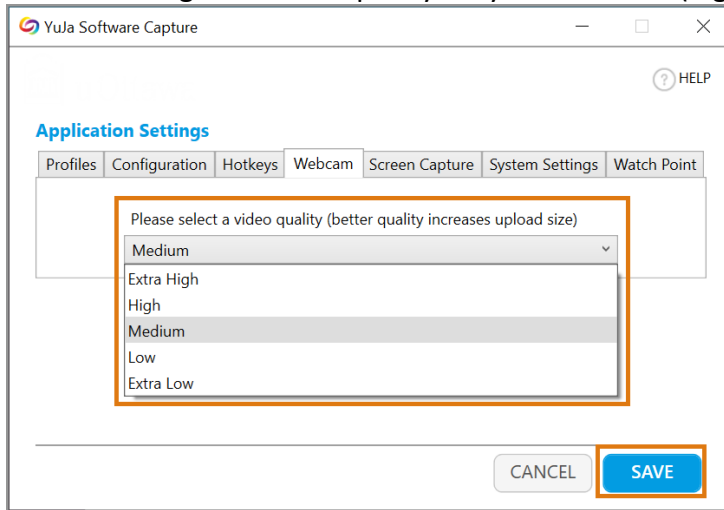
- You can choose to keep yourself logged in or choose a length of time to log you off after.
- You can choose your preferences for your **Recording Toolbar**.
- You can choose **Recording Options**.
- You can change the language of the YuJa display.
 - Click the arrow and choose a language from the drop-down menu.
 - Check mark **Override Display Language** to change the display and settings into the chosen language.



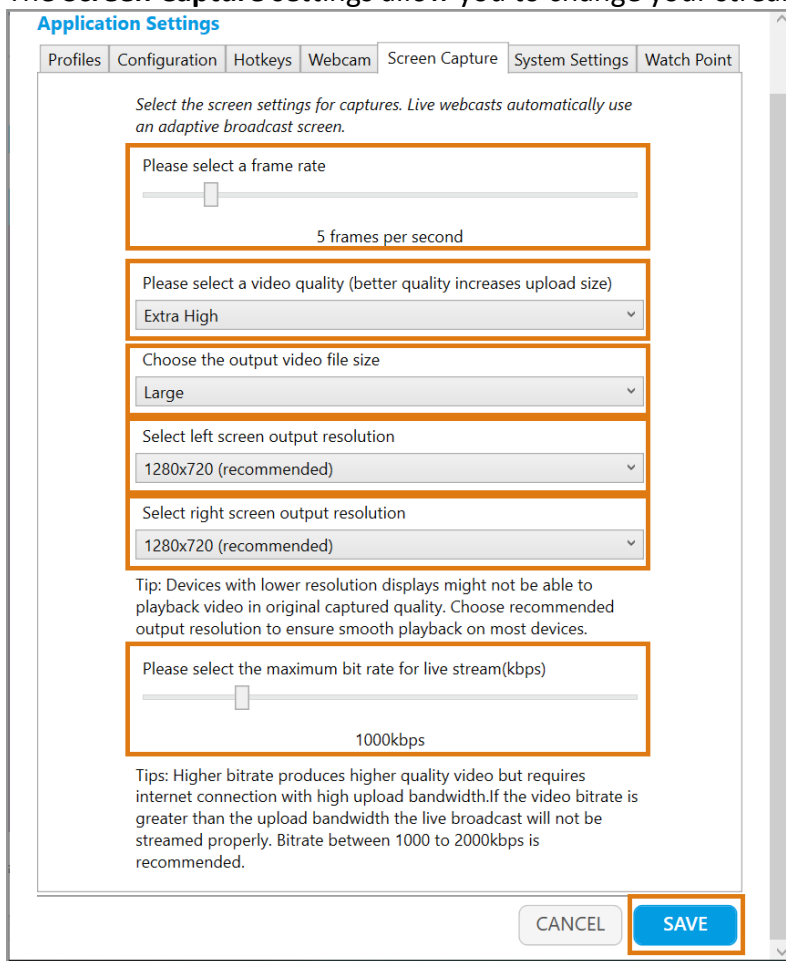
- e. You can **disable/enable** hotkeys for your stream, which allow you to click the hotkeys and perform actions like **Pause Capture**, **Start Capture** or **Finish Capture**.



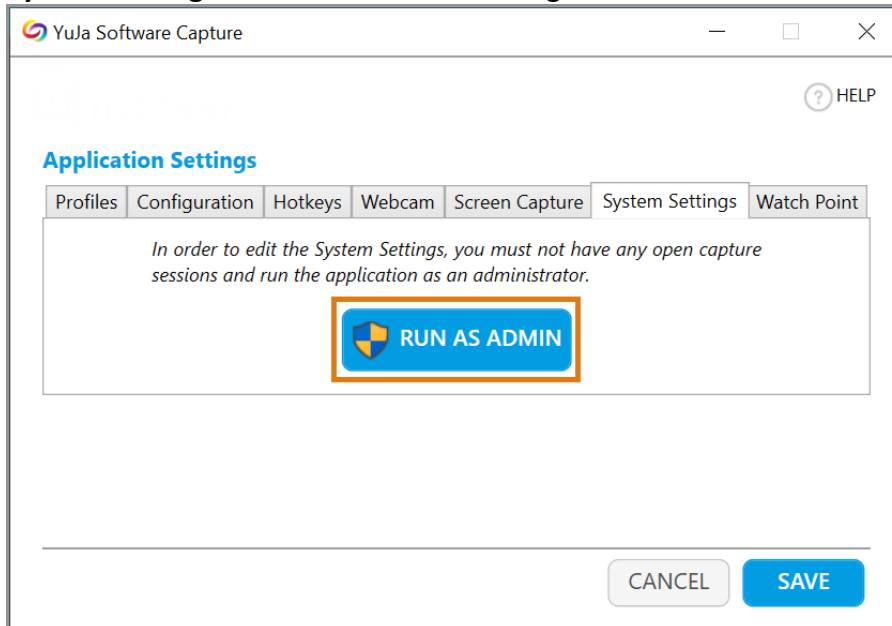
- f. You can change the video quality for your **Webcam** (bigger quality means bigger file size).



- g. The **Screen Capture** settings allow you to change your stream quality to a more detailed extent.

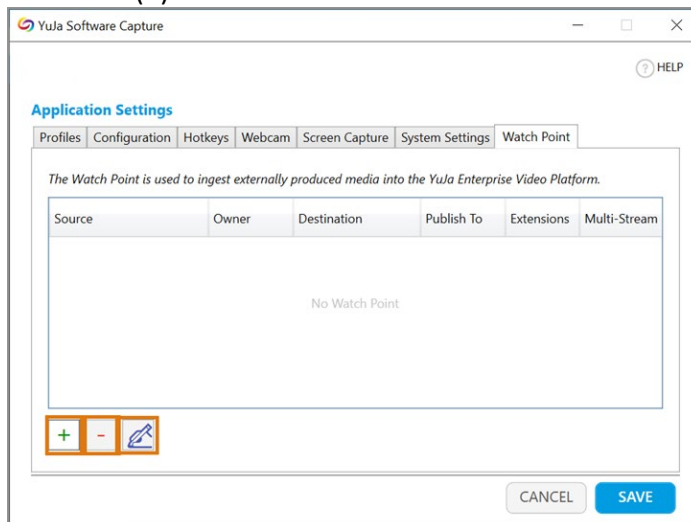


h. **System Settings** contain the Admin settings.



i. **Watch Point Settings** enables the automation of bulk uploads of video content to the Video Platform and allows for Multi-Stream Videos. In the main window, you can **Add (+)**, **Delete (-)** or **Edit** (hand with pencil) your selections.

i. Click Add (+).




- ii. Choose a **Source** where your content will be located on your computer.
- iii. Choose a **Destination** where your content will be uploaded.
- iv. Add **Owner** and **Publish** (in a course/group) selections.
- v. Use arrows to choose **Extensions**.
- vi. Choose a **Suffix** (only needed for multi-stream content).
- vii. Click **Add** to save settings.

viii. You can **Edit** or **Delete** a Source at any point.


YuJa Software Capture ×

Please specify the type of media that you would like to ingest.

Source

Owner 

Destination

Publish to Course/Group 

Extensions to Watch

<input type="checkbox"/> .mp4	<input type="button" value=">"/>	<input type="text"/>
<input type="checkbox"/> .m4v		
<input type="checkbox"/> .wmv		
<input type="checkbox"/> .avi		
<input type="checkbox"/> .mov		

Select the suffix of the streams related to single video

<input type="text"/>	<input type="button" value=">"/>	<input type="text"/>
	<input type="button" value="<"/>	