

WOOLCLAP- START AND GIVE ACCESS TO A SYNCHRONOUS EVENT



Teaching and Learning Support Service (TLSS), uOttawa

CONTEXT

Wooclap is a live audience engagement tool. It allows students to answer engaging and interactive questions in real-time during your course. Students can easily connect to a **Wooclap** event by clicking on the **Wooclap** activity link created in Brightspace or by entering the event code. Once given access to the Wooclap event, students can actively engage with their learning. The present document details how to start and give access to a synchronous event.

START AND GIVE ACCESS TO A SYNCHRONOUS EVENT

1. If you have created your **Wooclap** event in Brightspace, access your event link and proceed to the **next step**. If you have created your Wooclap event via www.wooclap.com, access your event and proceed to **step 4**.
2. Click on your Wooclap activity link. A new window will open, and you will be directed to your **Wooclap** event.

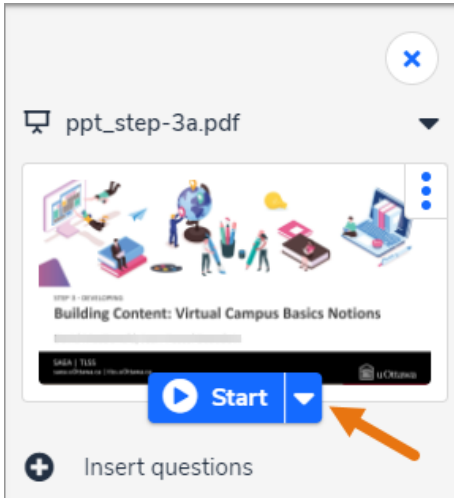
The screenshot shows the 'Module' page in Brightspace. At the top, there are 'Print' and 'Settings' icons. Below that, there are fields for 'Add dates and restrictions...' and 'Add a description...'. There are three buttons: 'Upload / Create', 'Add Activity', and 'Bulk Edit'. Below these buttons, there is a list of activities. The 'Wooclap' activity is highlighted with an orange arrow. It is labeled 'Wooclap' and 'External Learning Tool'. Below the activity name, there is a description: 'Wooclap is an interactive platform which makes courses more interactive and measure the comprehension of students using smartphones.'

3. You can open **Wooclap** in another window by clicking on the **full-screen** icon in **Brightspace**.

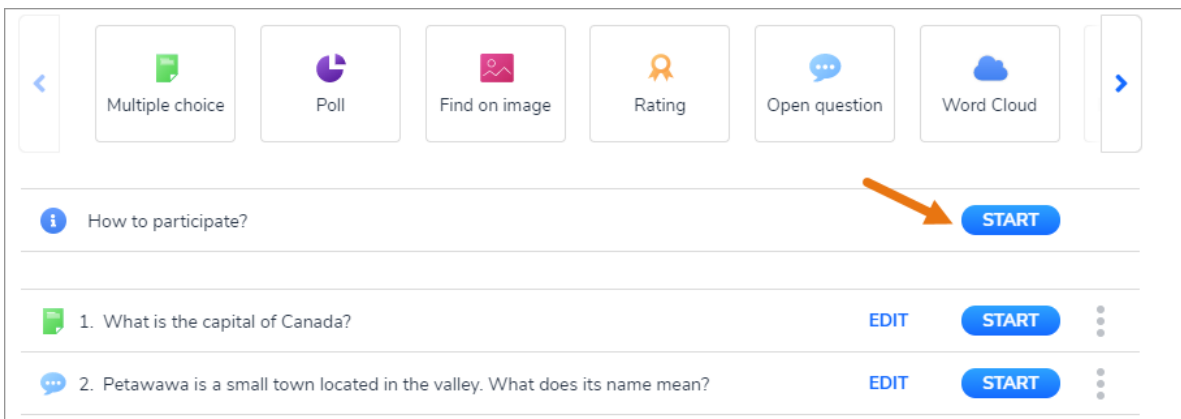
The screenshot shows the Wooclap event page in Brightspace. At the top, there is a 'Table of Contents > Module > Wooclap' breadcrumb. Below that, there is a 'Wooclap' header with a dropdown arrow. To the right of the header, there are icons for 'Print', 'Full-screen', and 'Back/Forward'. An orange arrow points to the 'Full-screen' icon. Below the header, there is a blue bar with the 'wooclap' logo and the user name 'Mame Fatou Seck' and 'EN'. Below that, there is a 'Wooclap' section with a 'Participate at:' field containing the URL 'www.wooclap.com/QLIKYY'. There are tabs for 'VOTES', 'MESSAGES', and 'PARTICIPANT PACE'. Below the tabs, there is an 'Import questions' button and a row of question types: 'Multiple choice', 'Poll', 'Find on image', 'Rating', 'Open question', and 'Word Cloud'. On the right side, there is a 'PRESENTATIONS' section with an 'Add presentation' button. At the bottom, there is an 'Authentication' section with a toggle switch.

4. There are two ways to launch a Wooclap event:

A. If you have imported your **PowerPoint** presentation into Wooclap, click on the **Start** button located in the upper right corner of your screen.



B. If you haven't imported your PowerPoint presentation into Wooclap, click on the **Start** button located next to the question: **How to participate**, to allow your students to connect to your event.



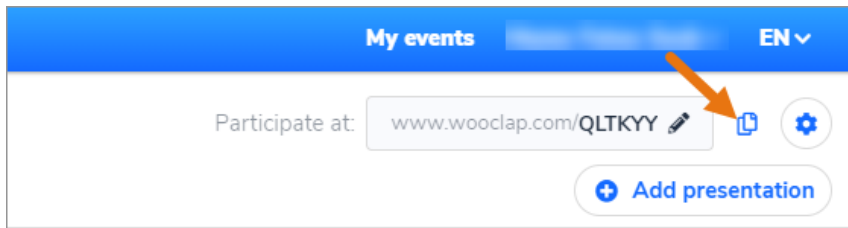
5. To display your **Wooclap** presentation on the entire screen, select the full-screen icon in **Wooclap**.

6. Next, share your screen through your videoconferencing system, as you would during a regular presentation.

- To know how to use **Zoom** with Wooclap, refer to the following video tutorial: [How to use Wooclap with the videoconferencing tool ZOOM.](#)
- To know how to use **MS Teams** with Wooclap, refer to the following video tutorial: [How to use Wooclap in Microsoft Teams.](#)

Important: If you are presenting your Wooclap event via MS Teams, students will be able to participate directly within the MS Teams meeting.

7. To give students access to your Wooclap event, copy its link and share it with them.



8. You can also share your event code with your students or simply display **Question 0- How to participate?**, to allow students to log into your event by scanning the QR code presented. If you have created your event within Brightspace, your students will also be able to connect through the activity link created in Brightspace.